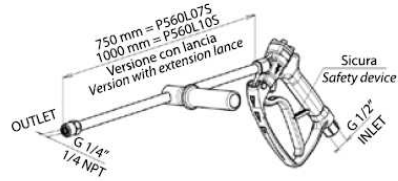


LANCE COMPLETE - SPRAY GUNS



P560

Portata massima Flow max. rate	60 l/min 15.85 gpm
Pressione massima Pressure max.	600 bar 60 MPa 8700 psi
Temperatura max. - Temp max.	70°C - 158°F
Peso - Weight	2,22 kg - 4,93 lbs



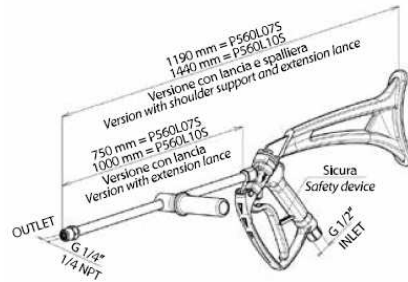
Per pompe - For pumps

Tutte le Pompe
All Pumps



P560S

Portata massima Flow max. rate	60 l/min 15.85 gpm
Pressione massima Pressure max.	600 bar 60 MPa 8700 psi
Temperatura max. - Temp max.	70°C - 158°F
Peso - Weight	2,52 kg - 5,6 lbs



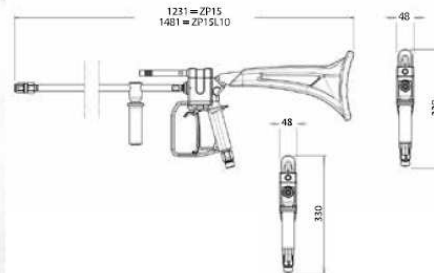
Per pompe - For pumps

Tutte le Pompe
All Pumps



P15

Portata massima Flow max. rate	40 l/min 10.57 gpm
Pressione massima Pressure max.	1500 bar 150 MPa 22000 psi
Temperatura max. - Temp max.	60°C - 140°F
Peso - Weight	5,7 kg - 12,54 lbs



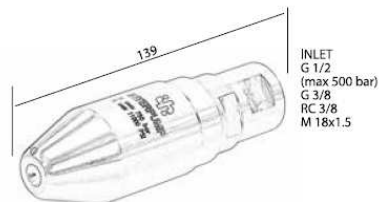
Per pompe - For pumps

VFH - VKH - SM
SKH - KV

UGELLI ROTANTI - ROTATING NOZZLES

RMAX750

Portata massima Flow max. rate	50 l/min 13.2 gpm
Pressione massima Pressure max.	750 bar 75 MPa 11000 psi
Temperatura max. - Temp max.	60°C - 140°F
Peso - Weight	1 kg - 2,2 lbs

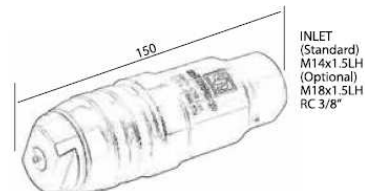


Per pompe - For pumps

HF - VFH - VKH - SM
SKH

RMAX 1500

Portata massima Flow max. rate	42 l/min 11.1 gpm
Pressione massima Pressure max.	1500 bar 150 MPa 22000 psi
Temperatura max. - Temp max.	60°C - 140°F
Peso - Weight	1,2 kg - 2,64 lbs



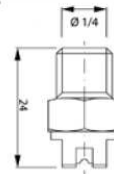
Per pompe - For pumps

VFH - VKH - SM - SKH



N1

Pressione massima <i>Pressure max.</i>	250 bar 25 Mpa 3650 psi
Diametro / <i>Diameter</i> mm	0,80 ÷ 3,00



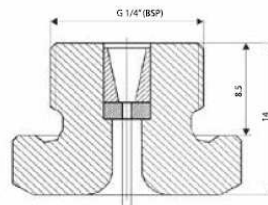
Per lance - *For spray guns*

P560 - P560S



N3/0°

Pressione massima <i>Pressure max.</i>	1000 bar 100 Mpa 14500 psi
Diametro / <i>Diameter</i> mm	0,70 ÷ 2,30



Per lance - *For spray guns*

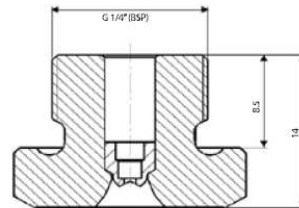
P560 - P560S

P15 type A



N3/30°

Pressione massima <i>Pressure max.</i>	500 bar 50 Mpa 7250 psi
Diametro / <i>Diameter</i> mm	0,70 ÷ 1,10



Per lance - *For spray guns*

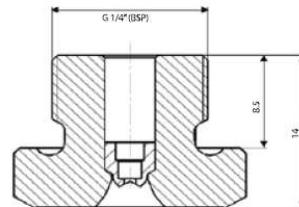
P560 - P560S

P15 type A



N3/40°

Pressione massima <i>Pressure max.</i>	500 bar 50 Mpa 7250 psi
Diametro / <i>Diameter</i> mm	1,20 ÷ 1,50



Per lance - *For spray guns*

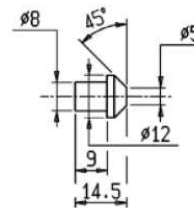
P560 - P560S

P15 type A



N4/0°

Pressione massima <i>Pressure max.</i>	1500 bar 150 Mpa 21750 psi
Diametro / <i>Diameter</i> mm	0,50 ÷ 1,50



Per lance - *For spray guns*

P15 type B

